

Price and equipment list “Vagabund 43”



Dimensions in metres ca.

(special dimensions possible against an additional charge)

L 14.98 x W 5.00 x H 3.20

Draught ca.

0.60 m

Living area ca.

43 m²

Terraces and gangway ca.

62 m²

Basic equipment

167,226.89 Euro

Motorisation package

63,781.51 Euro

All prices excluding VAT, equipment and transport costs.

We would be glad to help you to arrange a mooring and to arrange a charter company to rent your boat if you don't plan to use it yourself the whole year or you see your boat as an investment.



Examples of design



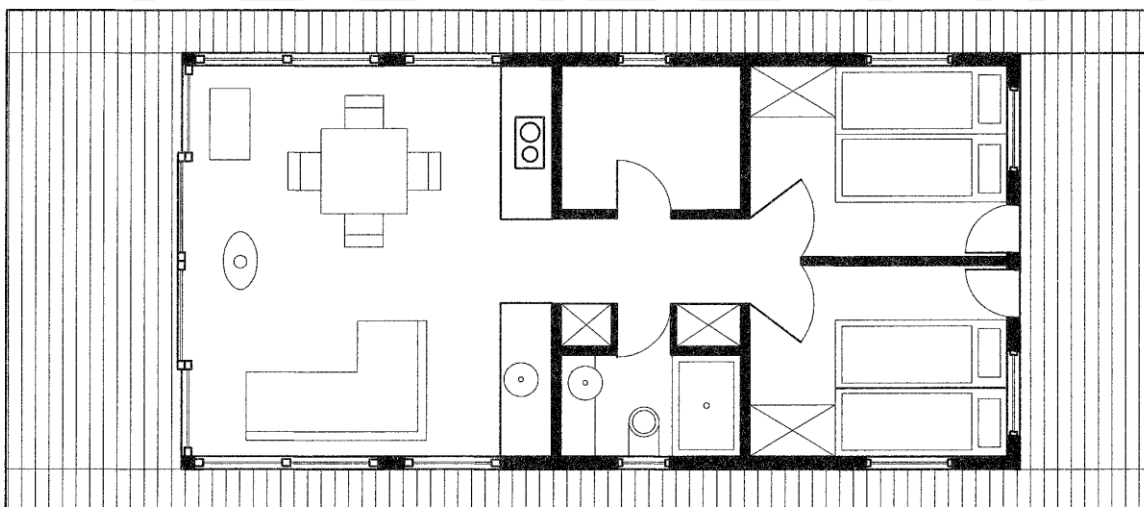
Basic equipment

167,226.89 Euro

- Catamaran design out of sea water resistant aluminium with hydrodynamic prow and a motor bracket for one engine (PE floats optional)
- additional floats in the middle if required as an option or due to the construction
- Outer walls optimally insulated as sandwich panels in white with pure rigid foam insulation (80 mm)
- Canopy above the foredeck and the afterdeck with lighting
- Roof edge in RAL colour (wood optic as an option)
- Walkable upper deck with insulated GFRP covering in white (additional coverings possible) including stairs and fixed railings made of stainless steel
- Floor, wall and ceiling area with optimal insulation
- Underfloor heating
- Windows and outer doors out of highly insulating decoupled aluminium profiles with double glazing (k-value 1.1) in RAL colour
- large lockable double sliding doors to the foredeck with room high fixed glazing right and left
- room panorama glazing on the side walls
- round hinged windows in bathroom and multi-purpose room
- in each bedroom a horizontal sliding window above the beds
- Bedroom with floor to ceiling sliding door to the terrace and fixed glazing
- Bathroom with a washbasin with mirror + WC + wall cupboards + shower with a complete glass partition
- Additional multi-purpose room (e.g. sauna, second bathroom, office or additional bedroom)
- Interior ceilings smooth white including integrated spotlights (real wooden panels varnished white as an option)
- Interior walls out of GFRP and laminate in white (different surfaces possible as an option)
- Floor covering out of high quality vinyl plastic in wood optic (glued over the whole area)
- Floor covering in the bathroom in wood coloured mosaic tiles
- Terrace coverings foredeck, gangways, stern made of artificial teak covering (Flexiteek or Permateek optional)
- surrounding impact planking out of wooden planks
- Outer cladding (structure) in wood optic
- Outer lighting of the structure in LED warm white
- Bow and stern terrace with railing out of stainless steel posts and handrail and stainless steel ropes and doors
- Surrounding gangway with stainless steel handrail (on the structure) and half a side railing in front of the ceiling to floor glazing
- Stainless steel supports on the foredeck
- 6 cleats (middle part, bow and stern each port and starboard)
- CE category D (inland waters)
- 30 litre electrical boiler for warm water
- Electrical system for heating, cooking, warm water, fridge and lighting including shore power connection 220 V
- Radio 2 loudspeakers in the living area and switchable under the canopy
- LED navigation lighting
- Display for waste water
- Fresh water connection (optional fresh water tanks ca. 400 litres for moored boat)
- Waste water tanks ca. 800 litres with extraction sockets
- Owners manual with operating instructions
- 2 lifebelts, 6 fenders, fire extinguishers, bathing ladder



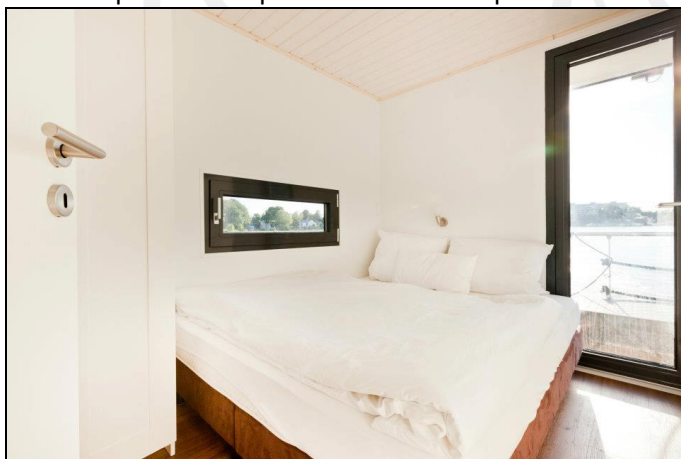
- 1 x 50 -bhp motor incl. controls and tank
- Steering stand in the living room with E-starter
- Double transversal bow thruster
- Double transversal stern thruster
- Operating panel with gauges for fresh water, waste water, fuel, battery
- Diesel electric system for heating, warm water, cooking
- Frost free system for fresh water system
- Depth measuring device
- Speedometer
- Reversing camera and bridge camera with one display
- 2 batteries (consumer battery + starter battery) incl. battery charger
- 12 /24/48/ 230 volt-electrical net (depending on the technical fittings) with converter
- Marine generator from Fischer Panda “whisper quiet” 4,5 KW incl. 3.5 KW Victron charging regulator
- 2 lock-up boxes on the stern terrace for fuel and generator
- Electrical anchor winch on the foredeck 2 anchors with rope each 12 Kg
- Fresh water pump + 400 litre tank (optional osmosis fresh water treatment system)
- Signal horn
- Rear view mirror



Price list special equipment

• Extension of the living area	on request
• Rotatable fireplace, including ceiling chimney and floorplate	4,201.68 €
• high quality fitted kitchen with upper and lower cupboards and sink unit	7,142.86 €
• Appliance set 230V: Fridge, Ceran hob 4 plates, oven, dishwasher (45cm)	2,521.01 €
• variable layout	on request
• Sun protection system out of aluminium (shutter) running in rails down to the foredeck	4,705.88 €
• Outer cladding of the side parts (structure) with real wood	1,680.67 €
• Outer cladding of the side parts (structure) with corrugated metal	1,260.50 €
• BUS technology / iPad controller	5,462.18 €
• Second outside steering stand foldable on the upper deck	7,142.86 €
• Motorisation package as electro-boat 2 x 10 Kw incl. battery pack, incl. larger 6 KW generator and larger 5 KW Victron (additional charge to motorisation package 1 x 50 bhp)	13,445.38 €
• Photovoltaic system ca. 800 W	3,781.51 €
• Mini biological waste water treatment system for two to four persons (not allowed in all districts!)	5,462.18 €
• Fresh water treatment system (osmosis) out of ambient water	2,941.18 €
• Extension of both tanks (water and waste water) each by ca. 400 litres	1,428.57 €
• Upper deck: removable railing, socket, lighting and drain	2,100.84 €
• stake anchors (2) water depths up to 2.50 m	2,521.01 €
• Interior venetian blinds or roller Blinds	on request
• Tailor made double bed (can be pulled out) with drawers and foldable mattress as backrest	1,176.47 €
• Awning	on request
• Sauna incl. electrical sauna oven and loungers (wood stove with chimney as an option)	6,302.52 €
• Air conditioning	on request
• Insect Protection	on request
• Launching into water (slipway or crane) ex dockyard	840.34 €
• Transport	on request

Further options and special wishes on request.



The furniture elements shown in the illustrations do not belong to the scope of the delivery (if not otherwise agreed)

