

MANDATORY BULLETIN No. SD-1/004 a

Concerning: All airplanes up to SN 59

Subject: Installation of backstop on the wing-flaperon middle hinge

Reason: Achievement of higher safety level in case of high speed flap deployment

Latest day of action: Before next flight

Action carried out by: RTF planes/manufacturer

Kits/builder (owner)

Necessary material: Delivered by manufacturer- Backstop (2 pcs), rivet AVEX 10344010 (2 pcs)

Necessary tools: Drilling machine, drill O4, O8, hand riveter

Sheets: 3

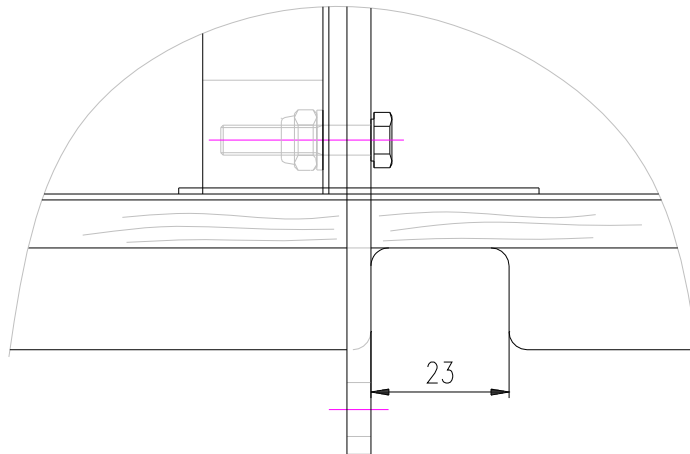


.....
Igor Spacek
Designer

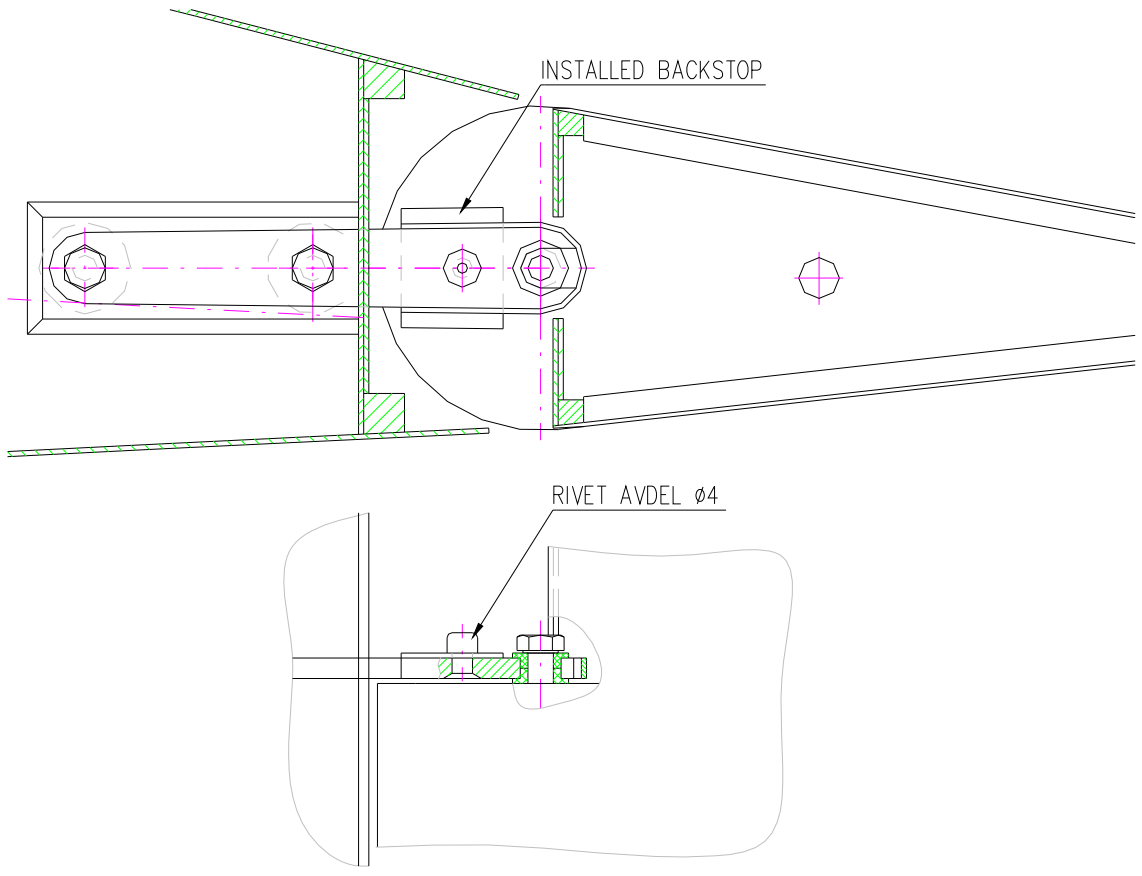
14.9.2012

WORK PROCEDURE

1. Dismantle wings from the fuselage
2. Dismantle flaperons from the wings
3. Modify lower wing skin in the vicinity of middle hinge in accordance to drawing.
(Upper skin not drawn). Varnish affected edges.



4. Put backstop on the hinge in accordance to drawing on followed sheet and drill hole
O 4 mm through backstop predrilled hole.
5. Countersank (chamfer) hole very carefully so that rivet head is flushed with hinge
surface.
6. Rivet backstop into place.



7. Install flaperon back on the wing using box/ring wrench as shown on drawing. Using of ratched wrench is recommended for faster work.

